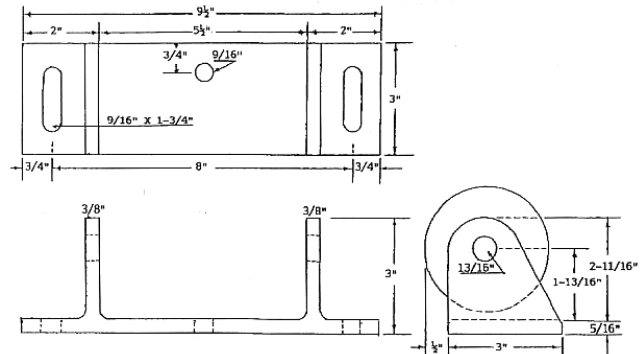
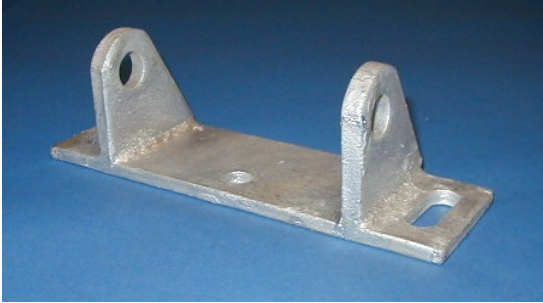

Mounting Bracket



MOUNTING BRACKET
ITEM NO. 06-15 (HD)
ITEM NO. 06-15SD (SD)

HD Mounting Bracket: This bracket is unique to the marina industry in that it was designed by **Henderson Marine** to address the problems of the old style bracket designed in the 1950's. This improved bracket was professionally designed and engineered to withstand maximum loading in all directions. It is cast from high strength ductile iron, so it is 50% stronger than the conventional welded bracket. Besides being stronger and better looking, we added an adjustable feature and placed the mounting holes so that the complete unit can be quickly installed without disassembly. The unit is hot dipped galvanized.

SD Mounting Bracket: This bracket is similar to our 611HD except that it is made of rolled steel with welded ears rather than cast ductile steel. This allows the bracket to be welded to a frame, if needed. These brackets are hot dipped galvanized to retard rust formation.

Weight: Approximately 3.5 pounds



HENDERSON MARINE SUPPLY, INC.
800-523-1586 www.hendersonmarine.com
Specifications subject to change without notice. Not responsible for rust.

Page 06-5
Last Updated: 1/28/2003 9:15:00 AM