
Henderson Dock Coating

HENDERSON DOCK COATING

Non-Slip Deck & Dock Coating. Non-Skid Finish Coat for Boat Docks, Ramps or Steps.

Slip resistant – Non Flammable – Long Wearing – Water Clean Up, Highly Resistant to Water, Solvent, and Ultraviolet Rays

Colors: Henderson Gray, Lido Gray, BMI Gray, Blue, Ford Blue, Green, Beige, Brown, Tile Red, Black, White

Packaging: One gallon cans or Five gallon pails

Product Description: A specially formulated anti-skid deck coating suitable for marine use. The acrylic resins used as binders in this product provide excellent adhesion, resistance to ultra violet degradation and resistance to abrasion. These acrylic resins, which feature fast dry and moisture resistance, also have good alkali resistance and flexibility. Incorporation of a silica aggregate gives excellent anti-slip and anti-skid properties. This deck and dock coating provides excellent performance in a non-polluting low VOC formulation which features water clean up. This coating is also free of heavy metals and biocides making it safe and non-toxic to marine life.

Typical uses: Concrete, wood and primed metal surfaces such as docks, decks, ramps, steps, cabin tops, etc.

Limitations: (Not to be construed as all-inclusive): Not recommended for garage floors or other surfaces on which vehicles are parked or driven.

Product Characteristics: SPREADING RATE: Approximately 200 sq. ft. per gallon, depending on method of application, porosity and texture of surface.

Recommended Dry Film Thickness: 3.3 mils per coat (theoretical)

Solids: Approximately 41% by volume

Drying Time: (at 75 degrees F, and 50% R.H.): To touch, 1 hour; To recoat, overnight

Finish: Gloss of cured film, on a smooth surface is approximately 10 on a 60 degree gloss meter. (Will vary depending on substrate and film thickness)

Surface Preparation: GENERAL: All surfaces must be cured, firm, dry, and cleaned free of dust, dirt, oil, grease, wax, chalky or loose paint, rust, loose mill-scale, bond breakers, and curing compounds, efflorescence, asphalt stains, mildew, or any other contamination or condition that would adversely affect the performance of the coating. Etch glossy, glazed, or dense surfaces. NEW CONCRETE SURFACES: Etch with 1 part muriatic acid and 8 parts water or other suitable commercial concrete etching solution, allow to stand until bubbling stops and follow with numerous rinses. Be sure surface is thoroughly dry before painting. Do not use solvents as cleaners. PREVIOUSLY PAINTED SURFACES: Prepare to a sound, clean surface. Spot prime bare or patched areas with a suitable primer as required.

Specifications: PRIMERS: Concrete and wood: Deck and dock coating is self-priming. Metal: Use a high quality marine grade metal primer. FINISH COATS: Henderson Marine Deck & Dock Coating

Product Handling: APPLICATION: Brush, roller, or spray. Avoid lap marks by maintaining a wet edge at all times. TEMPERATURE: Do not apply when material, air, and/or surface temperature is below 50 degrees F. Protect from freezing. THINNING: Apply at can consistency. CLEAN UP: Promptly, with warm, soapy water. VOC: Maximum 130 GPL calculated.

Limited Warranty: The statements made on this page concerning this material are given for information only. They are believed to be true and accurate and are intended to provide a guide to approved construction practices and materials. As workmanship, weather, construction equipment, quality of other materials, and other variables affecting results are all beyond our control, Henderson Marine does not make nor does it authorize any agent or representative to make any warranty of MERCHANTABILITY OR FITNESS for any purpose or any other warranty, guarantee or representation, express or implied, concerning this material except that it conforms to our manufactured quality control standards. Any liability whatsoever of Henderson Marine to the buyer or user of this product is limited to the purchaser's cost of the product itself.



HENDERSON MARINE SUPPLY, INC.

800-523-1586 www.hendersonmarine.com

Specifications subject to change without notice. Not responsible for rust.

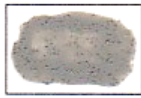
Page 14-1

Last Updated: 3/24/2003 9:35:00 AM

Henderson Dock Coating

Ordering Information and Colors:

ITEM NO.	COLOR
14-001	Gray
14-001A	Smooth Gray
14-001L	Lido Gray
14-001LS	Lido Gray Smooth
14-02	BMI Gray
14-003	Blue
14-005	Green
14-009	Beige
14-011	Brown
14-013	Tile Red
14-015	Black
14-017	White
14-023	Ford Blue



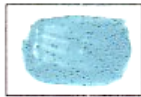
Henderson Gray*
14-001



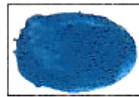
Lido Gray*
14-002L



BMI Gray
14-02



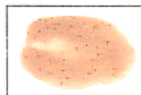
Blue
14-003



Ford Blue
14-023



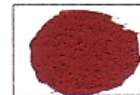
Green
14-005



Beige
14-009



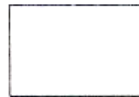
Brown
14-011



Tile Red
14-013



Black
14-015



White
14-017

*These colors stocked in smooth – all colors available in smooth by special order.
Custom colors available with minimum order. Universal Primer available. Please call for details.



HENDERSON MARINE SUPPLY, INC.
800-523-1586 www.hendersonmarine.com
Specifications subject to change without notice. Not responsible for rust.

Page 14-1a
Last Updated: 3/24/2003 9:35:00 AM