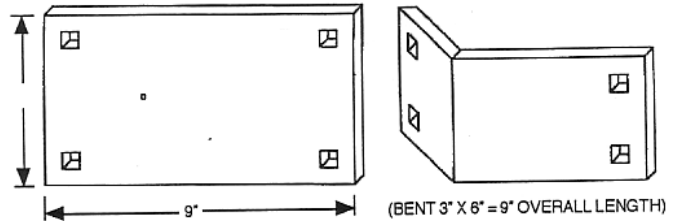
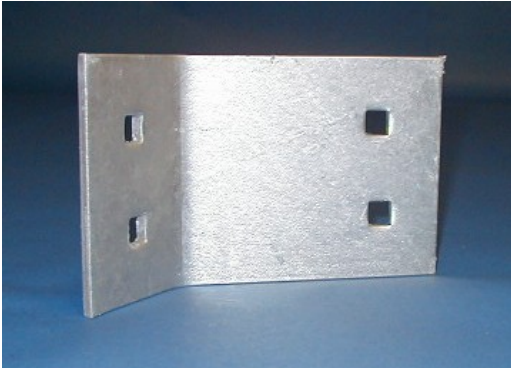


Dock Support Brackets



DOCK SUPPORT BRACKET

Plate sizes: 5" x 9" or 6" x 9" (bent 3" x 6"), 3/16" or 1/4" thick

Flat or bent to 90, 60, 45 or 30 Degrees. All are hot dipped galvanized and flat mild hot rolled steel.

Plates are punched with four 9/16" square holes to accommodate 1/2" galvanized carriage bolts. Special sizes and bolt configurations are available on special production. Call us and ask for details.

ITEM NO.	DIMENSIONS	ANGLE
07-01	6" x 9"	90°
07-02	6" x 9"	60°
07-03	6" x 9"	45°
07-04	6" x 9"	30°
07-05	6" x 9"	FLAT
07-06	5" x 9"	90°
07-07	5" x 9"	60°
07-08	5" x 9"	45°
07-09	5" x 9"	30°
07-10	5" x 9"	FLAT
07-104 (Custom)	5" x 24"	FLAT
07-105 (Custom)	6" x 24"	FLAT
07-106 (Custom)	8" x 24"	FLAT

